

T4F | J4T



Just4Track

Multi Smart Localizer

SEARCH
SEARCH
▶TR/01RS/

//SYS ON THE

FOUND 001

SEARCH
SEARCH
▶TR/01RS/

//SYS ON THE

FOUND 001

▶TR/010N ▶TR/0103
▶TR/010N ▶TR/0103

▶▶▶▶▶
▶SEARCH▶TR/0103

▶TR/0103
▶TR/0103

▶SEARCH▶TR/0103
▶SEARCH▶TR/0103

▶RS/
▶RS/

T4F | startup



- the innovative startup is owned by **two florentine companies** that have been active for years in the industrial maintenance sector, process predictability, integration of digital services
- the system has been fully in-house developed, with a contribution of **UniFI** / DINFO and **PolIMI** / lotLab



T4F | kickoff



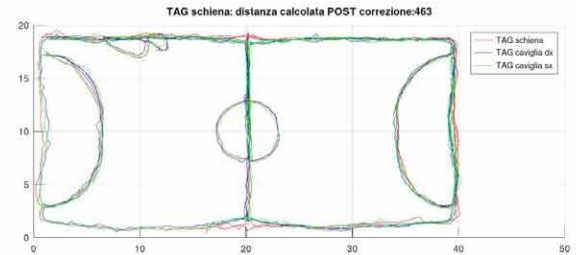
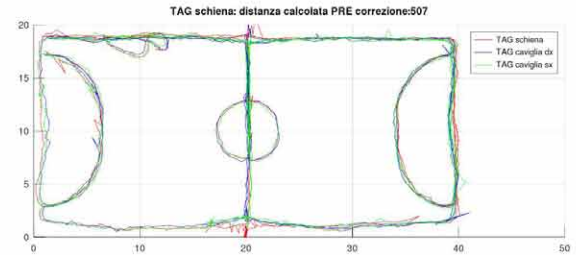
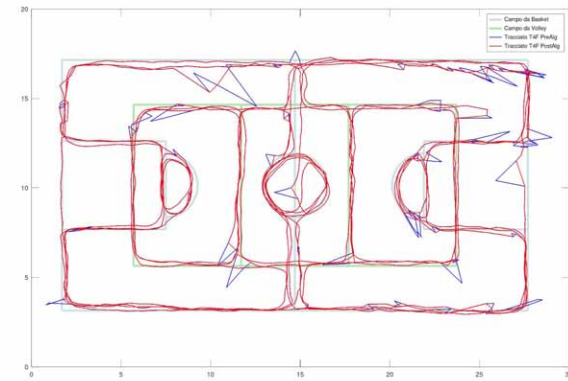
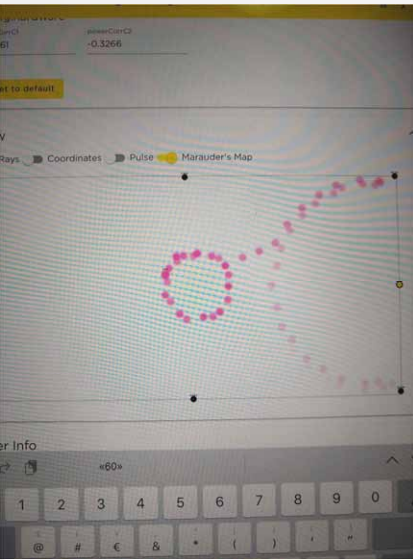
T4F | recent upgrade



T4F | right now

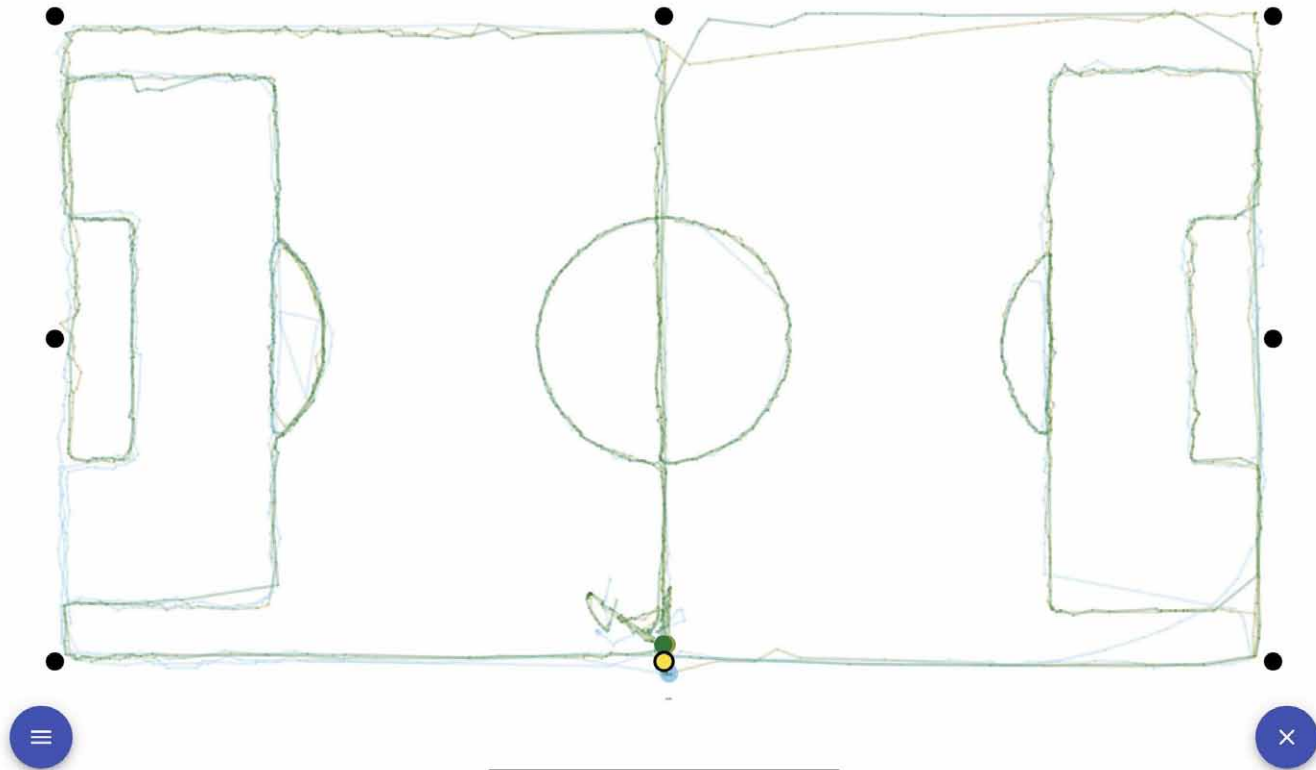
C11, C5, basket, volley, tennis, paddle.

Positions are located in a sharper way than GPS (*notice: people walking over the pitch lines isn't certainly a smart play scheme...*, it's just to show what we're talking about)

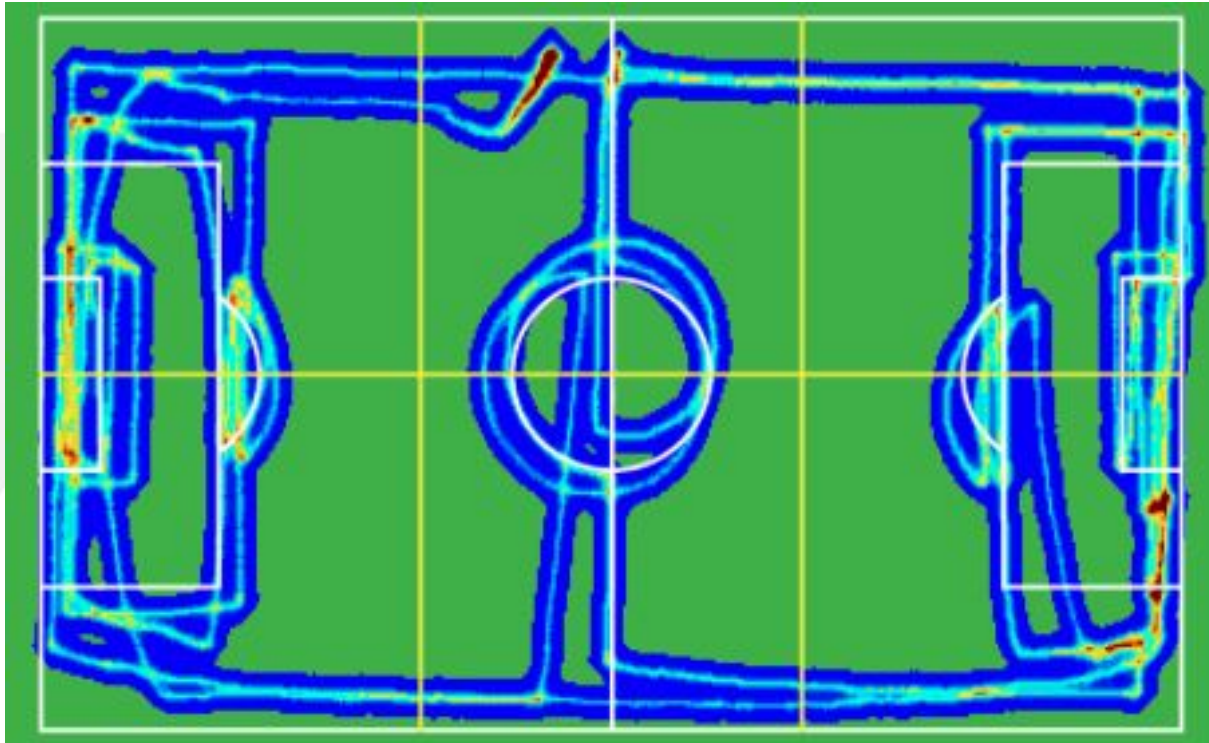


T4F | comparisons

our platform



T4F | comparisons



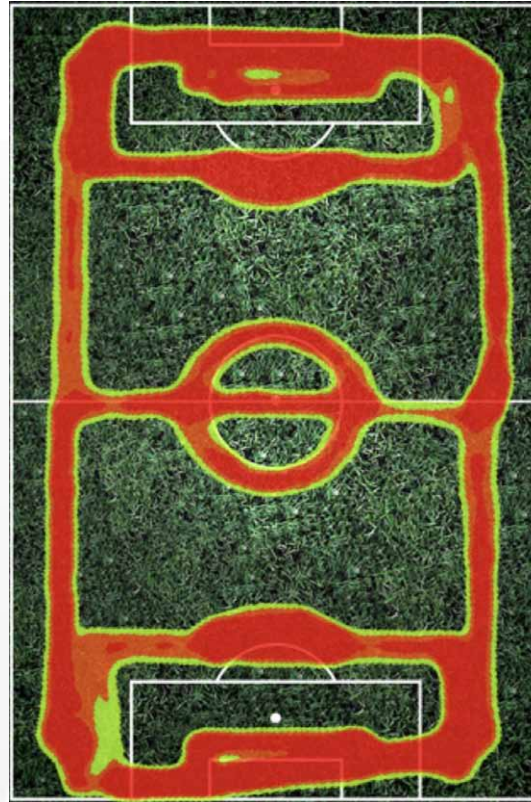
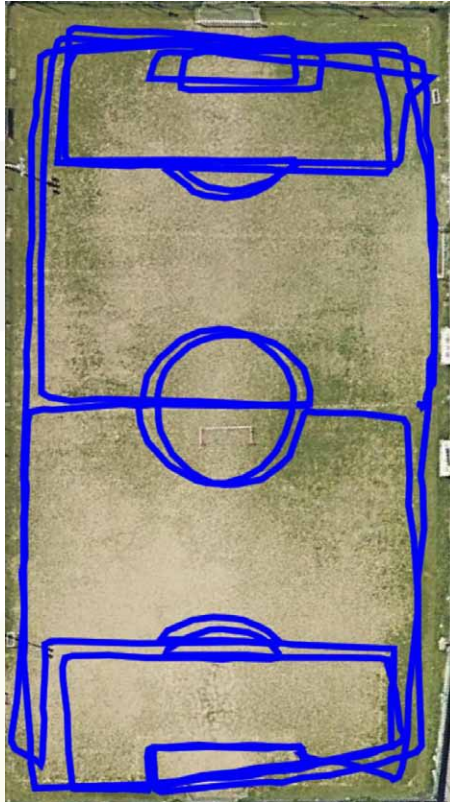
gps 1
100 euro

T4F | comparisons



gps 2
> 100 euro / device

T4F | comparisons

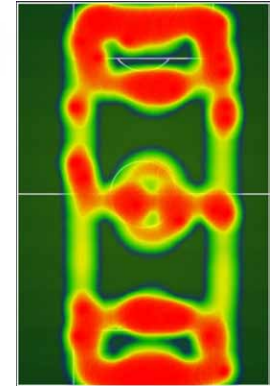


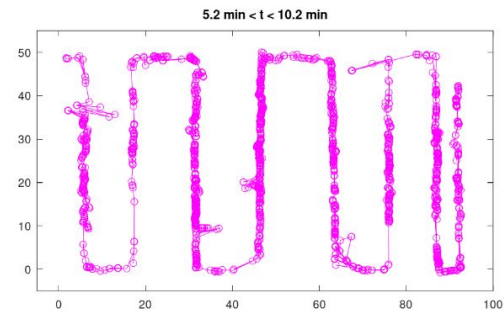
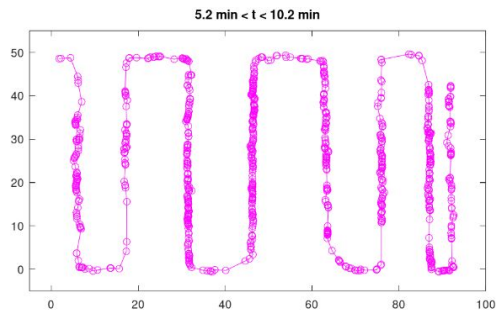
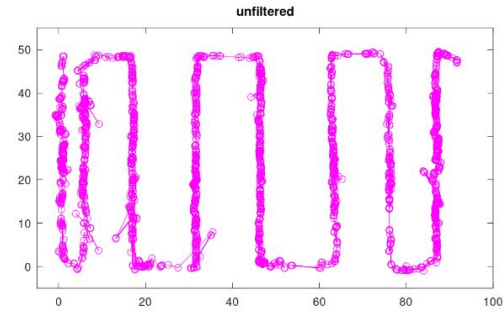
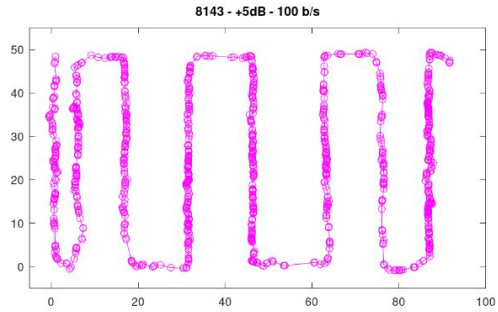
gps 3
200 euro

T4F | comparisons



gps 4
200 euro







Kama for

Lega Serie A

Lega Serie A and Kama.Sport: The Data-Driven Era begins

Lega Serie A, the top professional soccer league in Italy, has signed an agreement with Kama.Sport, a leading start-up in the Italian sports-tech scene.

[Discover More](#)

We are working to provide our realtime data to **KAMASPORT**, which supports tactical analyses for Serie A and also many teams in Premier League and Liga.

T4F > Just4Track

it's sport-compliant > **it works almost everywhere.**

- the important thing is that there are sufficient empty spaces in the survey volumes
- only wide metallic nets or concrete walls in linesight could give some problems
- the **area map** gets preloaded
- an inspection is still essential.

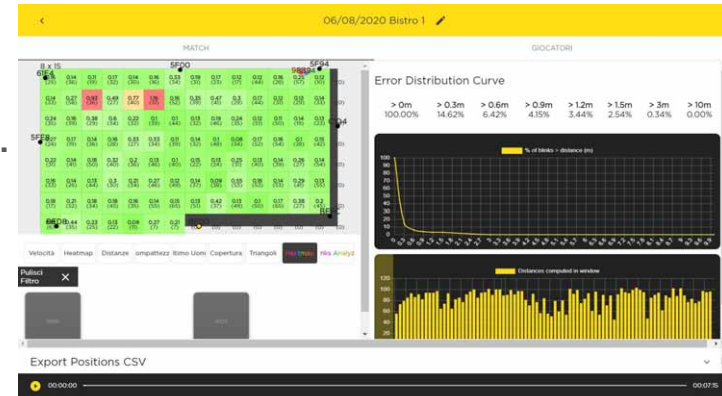


Gathered data can be anonymised and historicised.

Trackings are **2D, outdoors / indoors** and **realtime**.

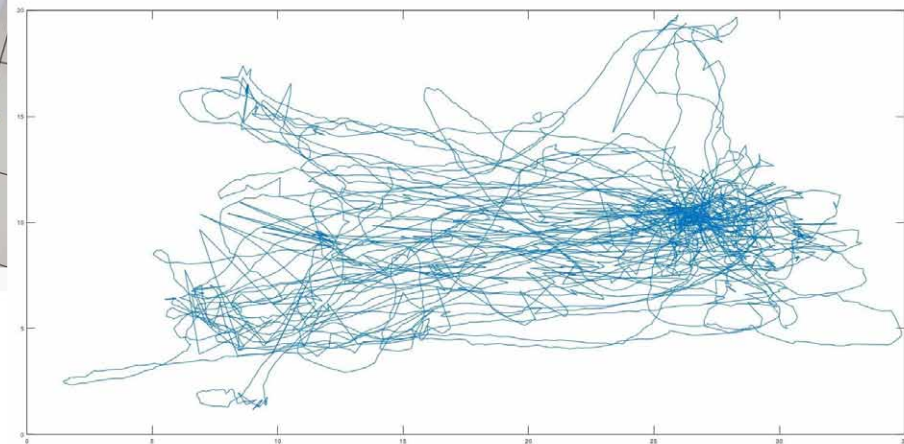
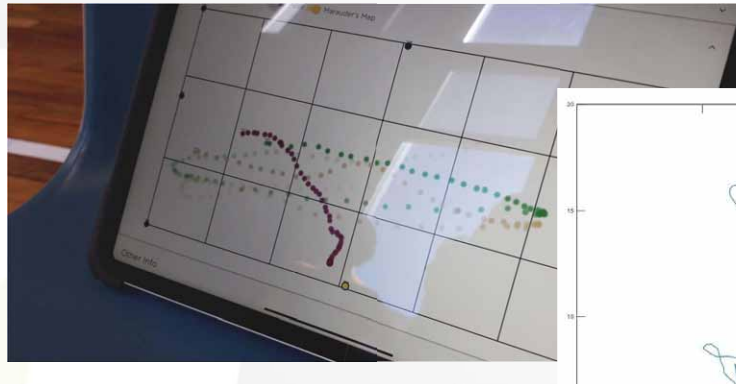
The possible applications are huge: i.e.

process optimization or safety improvement.



J4T | now

We have a **general way to track moving items** of various kinds, outside or inside **indoor premises**, realtime and sharply.



J4T | now

We have a **general way to track moving items** of various kinds, outside or inside **indoor premises**, realtime and sharply.



J4T | in a nutshell

1) **beacons** are placed

2) the software is turned on and runs over a **laptop**

3) you fix the **tags** to what you want to track: they will be immediately displayed in **realtime** on the laptop

4) scanning a **QR code**, everything passes on **smartphone or tablet**

